

HAYFLOW™

HAYWARD's Revolutionary New Filter Element

HAYFLOW™ – The Next Generation of Filtration Systems



The concentric media layers are welded onto a top and a bottom ring

With this new, patent pending filter element HAYWARD technology has combined the best of both bag and cartridge filters into one single filtration element for outstanding filtration performance. Because HAYFLOW's surface area is up to 70% greater than a similar size filter bag, existing systems that use HAYFLOW experience longer filter element life and less changing, resulting in reduced running costs. With HAYFLOW, designers of new bag filtration systems can opt for reduced running costs or, because of the high flow rates possible with HAYFLOW, reduce filter housing size by up to 50% thus lowering the initial cost of the system.

What Makes the HAYFLOW™ Element Better

The heart of HAYWARD's HAYFLOW filter element is two concentric cylinders of high-quality extended life HAYWARD filter media. These cylinders are formed using unique welding technology to create a no by-pass seam. The diameter of the cylinder is the same size as a standard filter bag, so retrofitting into existing systems is easy. The HAYFLOW element is fitted with HAYWARD's patented SENTINEL® sealing ring, ensuring a positive seal with the filter vessel to protect against bypass of the process media.

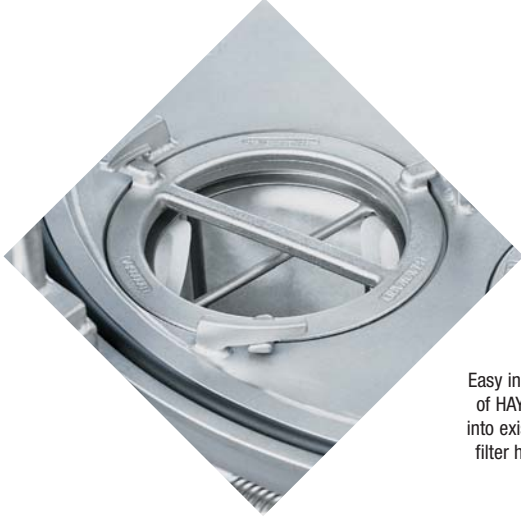
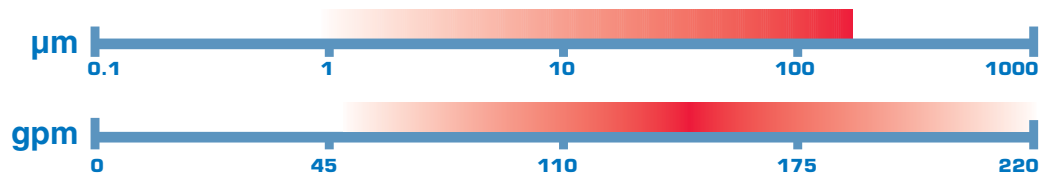
How the HAYFLOW™ Element Works

The process fluid enters the inside of the element, passes through it, and exits through the vessel outlet. Like a filter bag, the filtered-out material stays inside the HAYFLOW element. The HAYFLOW element is unlike a filter cartridge, where the residue of the filtered material remains on the outside of the cartridge, complicating the changing process.

An All-Around Better Choice

Changing a HAYFLOW filter element can actually be easier than changing a filter bag, because HAYFLOW's revolutionary design only retains 25% of the residual liquid volume of a similarly sized filter bag. When you need to change the element, it weighs up to 75% less than a filter bag. A full bag can weigh up to 33 lbs, so weight is an important consideration for the system operator.

NOMINAL RATED



Easy installation of HAYFLOW's into existing bag filter housings



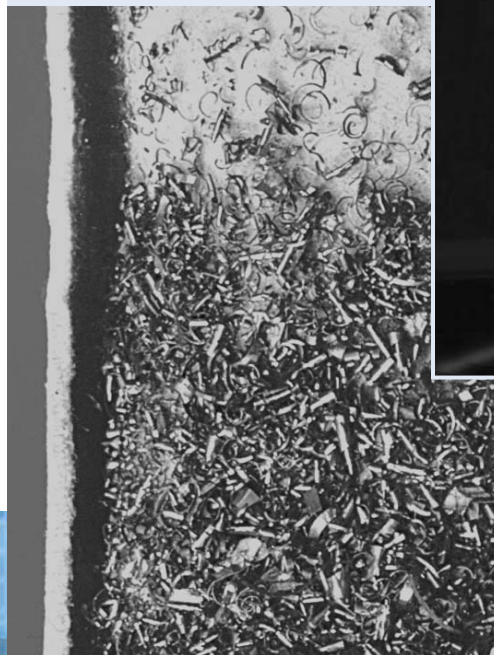
The Choice is Yours

HAYWARD's HAYFLOW filter element can be adapted to a wide range of applications through the use of different filter media. Basically, any weldable filtration media can be used to construct a HAYFLOW element. Multilayered construction is also possible for applications that require it. Using melt-blown polypropylene media, HAYFLOW elements are available with high micron retention ratings, and with selective absorption characteristics as well. Standard HAYFLOW filter elements are available in both polypropylene and polyester construction. These two materials are very versatile and will perform in a majority of applications over a wide range of temperatures. HAYWARD uses a high-quality, extended life DURAGAF™ needle felt media with extremely fine fibers and higher pore volumes for superior performance. Both feature either polypropylene or polyester SENTINEL sealing rings.

The lower retention volume of HAYFLOW means less saleable product has to be thrown away. This important HAYFLOW feature can provide considerable savings over time. HAYFLOW'S cylindrical construction offers strength unrivaled in other similar products. The all-welded filter element is fit to a matching restrainer basket, allowing the filtration media to be replaced easily and quickly. The close-tolerance fit of the filter and the restrainer basket provide ease of installation and worry-free performance. This combination of fully-welded seams and a rigid, cylindrical geometry provides strength over a full range of operating differential pressure. The HAYFLOW element is always smooth and fits to the basket walls without crimps or pleats, guaranteeing a quick and easy installation. Batch system operators often do not want to stop a batch process and change a filter bag. Using HAYFLOW, system operators have found up to 5 times the life over a similar size filter bag and experienced reduced operating costs.

Usually, bag filters are bigger than cartridge filters but are easier to handle and more cost effective. HAYFLOW brings the best of both systems together...high flow rates in compact vessels, or a longer lifetime and extended changing cycles. HAYFLOW combines highly efficient filter media, enlarged surface area, better dirt-holding capabilities and a reduction of the residual liquid volume retained in the element. All of these advantages result in superior filtration performance.

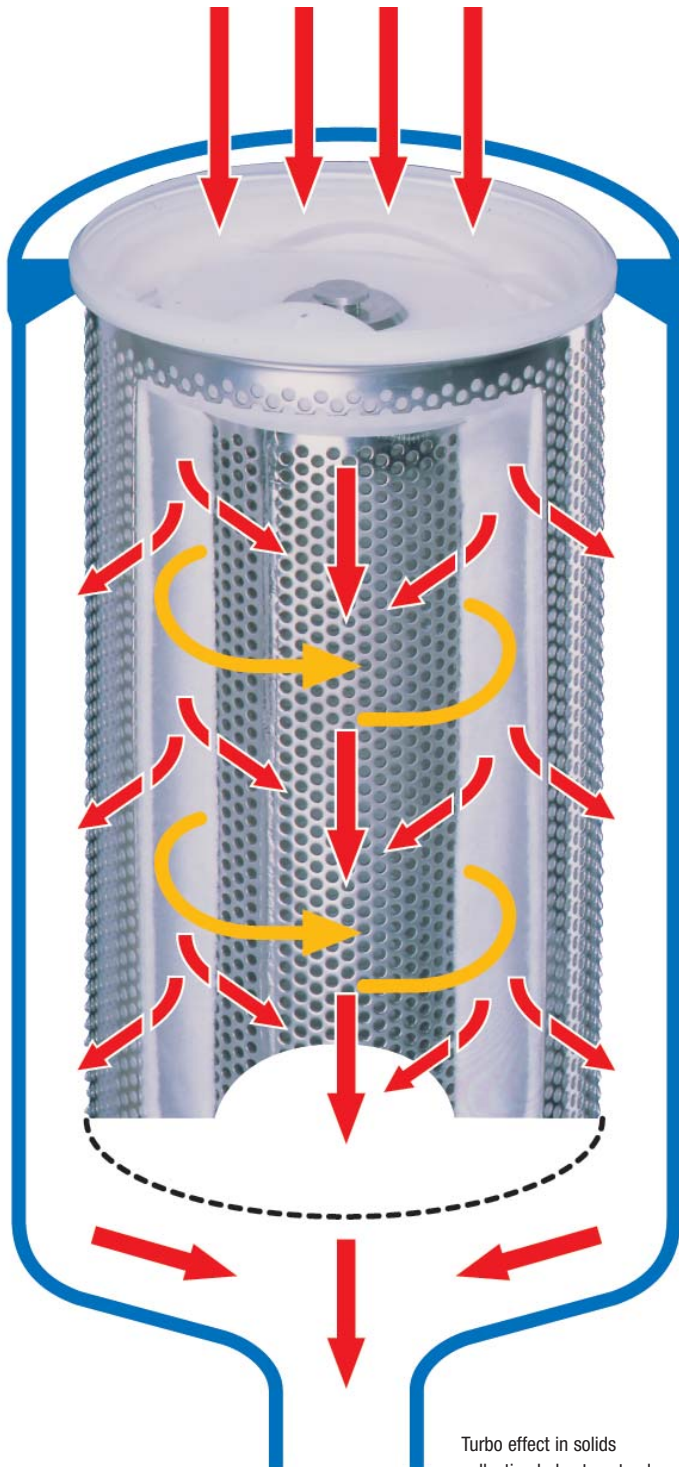
Cut away of the element from an E-coat tank filtration after being in service for eleven weeks



Metal fines collected from parts washer

HAYFLOW™

The HAYFLOW Effect



Turbo effect in solids collection helps to extend life of filter element

Features:

- Higher flow rates - smaller, less costly housings can be used
- Up to five times greater life over filter bags
- Liquid losses are 25% of similar size filter bag
- SENTINEL sealing ring and 100% welded construction for no by-pass
- Up to 35 times more effective than standard filter cartridges
- Low pressure differential results in less energy consumption of pumps
- Very cost-effective in comparison to similar systems
- Rugged cylindrical construction
- Easier maintenance with reduced costs
- Easy retro fit to existing filter housings

And....HAYWARD's superior support, before, during and after system installation.

Take Advantage of HAYFLOW™ Now

You can easily change over from ordinary bag filtration to the revolutionary new HAYFLOW filter element. Existing bag filter housings need only to be fitted with a new HAYFLOW restrainer basket for instant compatibility with the HAYFLOW element. No tools, special equipment or modification to the vessel are required. Just drop in the new basket, and you are ready to take advantage of all the benefits offered by a HAYFLOW filtration system.

Still Not Sure if HAYFLOW™ is Right for You?

Contact us. We can show you how you can save money and improve your filtration process using HAYFLOW filter elements.

Application:

- ✓ Automotive
- ✓ Sugar Processing
- ✓ Paints, Coatings, Inks, Dispersions
- ✓ Resins
- ✓ Water and Waste Water Treatment
- ✓ Solvents
- ✓ Lubricants and Metalworking Fluids
- ✓ Aqueous and Solvent Based Cleaners in Parts Washing Equipment
- ✓ Pulp and Paper
- ✓ Oil and Gas Exploration and Processing
- ✓ Pharmaceutical
- ✓ Food Processing
- ✓ Chemical Process Industries
- ✓ Potable Water, Beer, and Wine
- ✓ Edible Oils



Remember “Filter Cost” and “Filtration Cost” are Not the Same Thing

We can explain the difference and demonstrate the HAYFLOW advantage in your application.

PRODUCT CODES

HAYFLOW™

